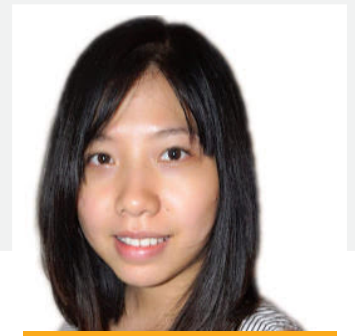


JUDY WEI 魏苑好

LANGUAGE & LEARNING SUPPORT TEACHER



EDUCATION

M.S. EDUCATION

State University of New York
College at Buffalo 2013

B.ED. SPECIAL EDUCATION

National Changhua University of
Education 2010
4-year Scholarship Recipient

CERTIFICATIONS

ORAL PLACEMENT THERAPY
2020

**BILINGUAL MULTILINGUAL
LEARNERS**
2020

**DIFFERENTIATING
LANGUAGE AND LEARNING
SUPPORT**
2019

**NATIONAL ASSOCIATION
OF SPECIAL NEEDS
TEACHERS**
2017

**ADVANCED CERTIFIED
AUTISM SPECIALIST**
2017

LANGUAGES

- English
- Chinese
- Thai
- Japanese

PROFILE

My objective is to obtain a teaching position to create engaging learning environments where all students are able to make meaningful connections and apply their learning in a real-world context. I aim to create a community of learners that collaborate and become lifelong learners. I am a highly motivated and passionate multi-lingual educator that has experience teaching international students, English language learners, and special needs. I have more than 10 years of experience teaching inquiry-based education and seek to connect with other passionate teachers.

WORK EXPERIENCE

ELL TEACHER

Canadian International School | Singapore | Jul 2018 – Present

- Delivered supportive English language development for K-12 students
- Collaborated with homeroom teachers to support lesson planning
- Provided in-class support for individuals and small groups
- Administered diagnostic and language proficiency assessments to support admissions, student placement, and data-driven discussions

GRADE 1 BML TEACHER

Keystone Academy | Beijing, China | Jul 2016 – Jul 2018

- Facilitated English immersion classroom through inquiry-based lessons
- Supported student becoming fully bilingual in English and Chinese
- Achieved student success meeting U.S. English language arts standards in speaking, listening, reading and writing
- Applied technology authentically to support collaboration, creativity, communication, and digital citizenship

ELL TEACHER

International School of Bangkok | Bangkok, Thailand | Jul 2013 – Jul 2016

- Collaborated with primary school teachers to provide support for students with English as an additional language
- Planned and delivered Readers and Writers workshops for individual and small groups
- Prepared running records and assessed students' literacy development in speaking, listening reading, and writing

KINDERGARTEN TEACHER

Magic Years International School | Bangkok, Thailand | Jul 2010 – Jul 2013

- Designed and implemented original PYP units for international early years and kindergarten students
- Implemented and evaluated students in accordance with the Plan and Execute Program of Inquiry Standards set by the IBO
- Taught after school Chinese during a supplemental after school program

DEVELOPMENT

NWEA MAP LEARNING

2019

WIDA ASSESSMENT

2017

21ST CENTURY EDUCATION

2016

IPC PROFESSIONAL LEARNING

2016

CONTEXT FOR LEARNING MATH (CATHERINE FOSNOT)

2015

REGGIO EMILIA WORKSHOP

2014

ENGLISH LANGUAGE LEARNING CONFERENCE

2013

READERS AND WRITERS WORKSHOP

2013

ENGLISH LANGUAGE LEARNING SPECIALIST

2013

EARCOS ASSESSING ASSESSMENT

2013

PYP ASSESSMENT

2012


THAI LANGUAGE AND CULTURAL COURSE (ISAT)

2011

MAKING THE PYP HAPPEN


2010

CONTACT

 judywei@live.com

 +1 904 686-8515

 @aimbrightstars

 3362 Caroline Ridge LN E
Jacksonville FL USA

WORK EXPERIENCE (CONTIUNED)

ENGLISH TEACHER

Manhattan English School | Taipei, Taiwan | Jul 2008 – Jul 2009

- Created and implemented weekly educational English reading and writing lesson plans for 13 classes for more than 200 students
- Designed supportive lessons that challenged students at various English proficiency levels
- Assessed language proficiency for various ages and levels

PRE-K TEACHER

Manhattan English School | Taipei, Taiwan | Jul 2008 – Jul 2009

- Taught preschool children English vocabulary, conversational dialogue, songs, and games
- Created creative and engaging educational activities that promoted learning English
- Motivated students to learn a new language

LEARNING SUPPORT TRAINING

NATIONAL TAICHUNG SPECIAL EDUCATION SCHOOL FOR THE VISUALLY IMPARED

English Teacher | Taichung, Taiwan | 2010

NATIONAL TAICHUNG SPECIAL EDUCATION SCHOOL FOR THE HEARING IMPARED

English Teacher | Taichung, Taiwan | 2009

TAIWAN CHANGHUA REFORM SCHOOL

Counselor | Changhua, Taiwan | 2009

NATIONAL HEMEL EXPERIMENTAL SCHOOL

Learning Support Teacher | Changhua, Taiwan | 2007

NATIONAL CHANG-TAI JUNIOR HIGH SCHOOL

Learning Support Teacher | Changhua, Taiwan | 2007

NATIONAL CHANGHUA SCHOOL FOR STUDENTS WITH SPECIAL NEEDS

Special Needs Teacher | Changhua, Taiwan | 2006

REFERENCES

DR. ANDREW DAVIES

Head of School – ISB; Bangkok, Thailand

Mail : andrewd@isb.ac.th

Phone : +66 2963-5800 Ext. 1104

MS. MARY JEW

Principal – Keystone Academy; Beijing, China

Mail : nabepresident@yahoo.com

Phone : +1 650 349-8388

MS. KHANUM TAHMPI

Head of School – MYIS; Bangkok, Thailand

Mail : khanumt@magicyears.ac.th

Phone : +66 2156-6222

MS. COLLEEN DRISNER

Head of Student Support and Well Being – CIS; Singapore

Mail : colleen.drisner@cis.edu.sg

Phone : +65 8799-3102